



www.morsky.ca

Ground water & product recovery trenches

Dewinds One-Pass system installs deep ground water & product recovery systems in highly contaminated soils with high water tables.

Details & benefits:

Trench depths: 0-40' deep (deeper with grading)

Trench width: 12" - 48" wide

Speed: Typically a 200-300 linear foot trench with sump can be installed in one day.

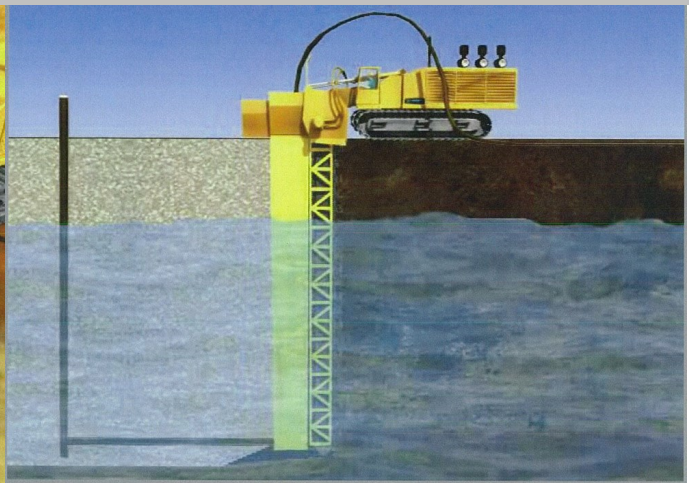
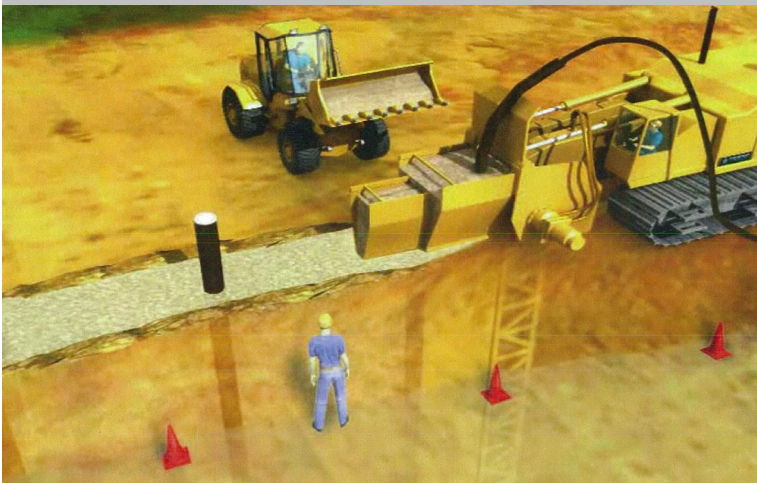
Safety: Continuous backfill eliminates dangerous open trenches.

Results: Superior performance in low-permeability soils.



DEWIND ONE-PASS TRENCHERS CAN INSTALL COMPLETE CONTAMINATED GROUNDWATER COLLECTION SYSTEMS IN A SINGLE PASS

For questions and pricing, please call (306) 924-1065



Other Dewind One-Pass Services

Environmental Services/Construction:

- Slurry walls
- Permeable reactive barriers
- HDPE Barrier walls

Civil Construction/Services:

- HDPE Pipe installation
- Irrigation systems
- Construction dewatering
- Formless foundation
- Drilling services